



GRAFICS XAVIER BARO

Patrons dissenyats per gaudir del punt de creu
Patrones diseñados para disfrutar el punto de cruz
Patterns designed to enjoy cross stitch

Patró gratuït



Tecnologia **GXB-CSEI** (Interpretació Patró Fàcil)

<https://graficsxavierbaro.com>

Ref. Caballs BN
Mides labor en tela Aida
14 ct. - 55 x 59 cm.
18 ct. - 43 x 46 cm.

Punto de Cruz
Gurutze Puntua
Ponto de Cruz
Cross - Stitch
Point de Croix
Punto Croce
Puntada Cruzada
Kreuzstich



Fàcil – Fàcil - Easy



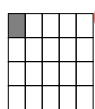
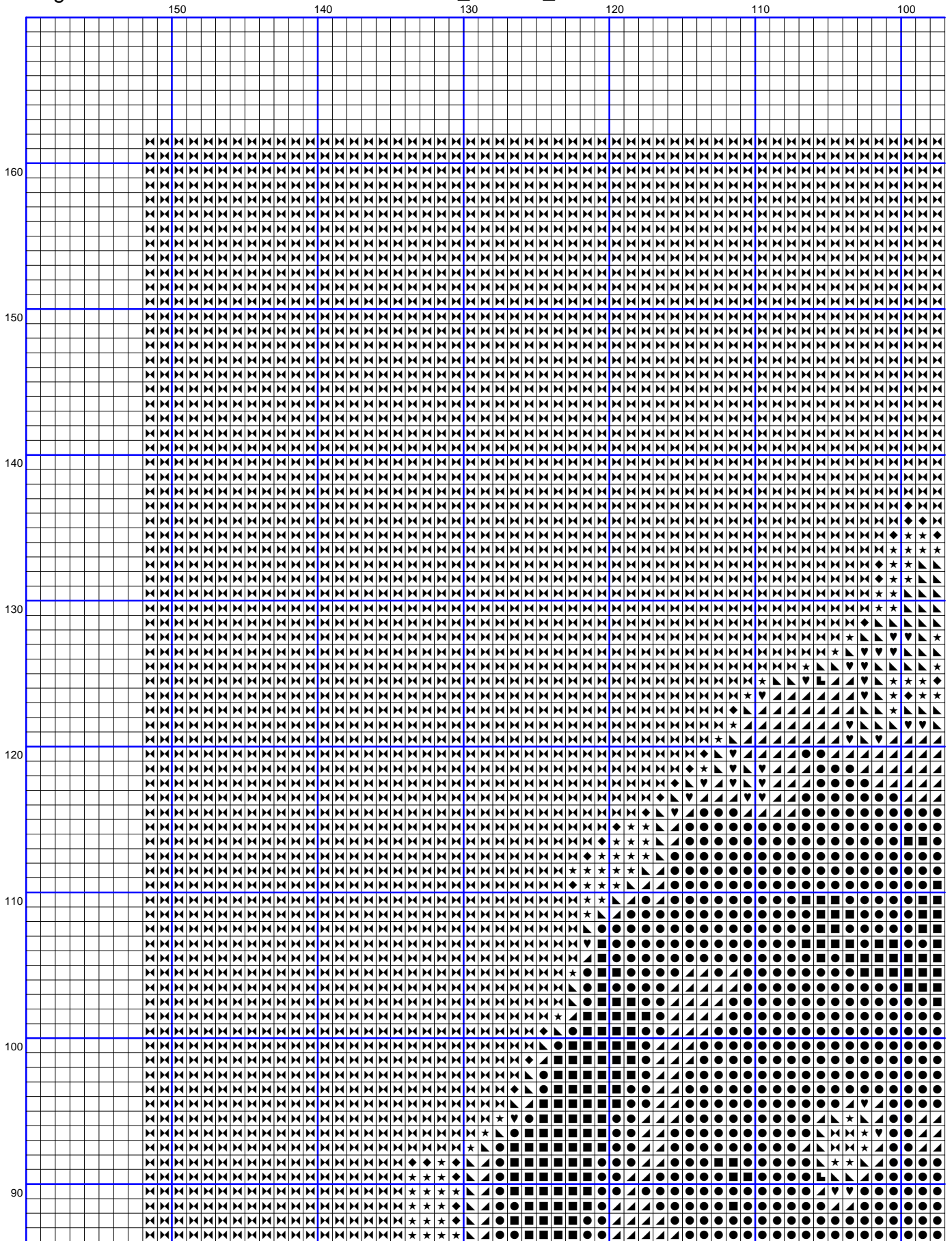
Moderat – Moderado - Moderate

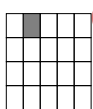
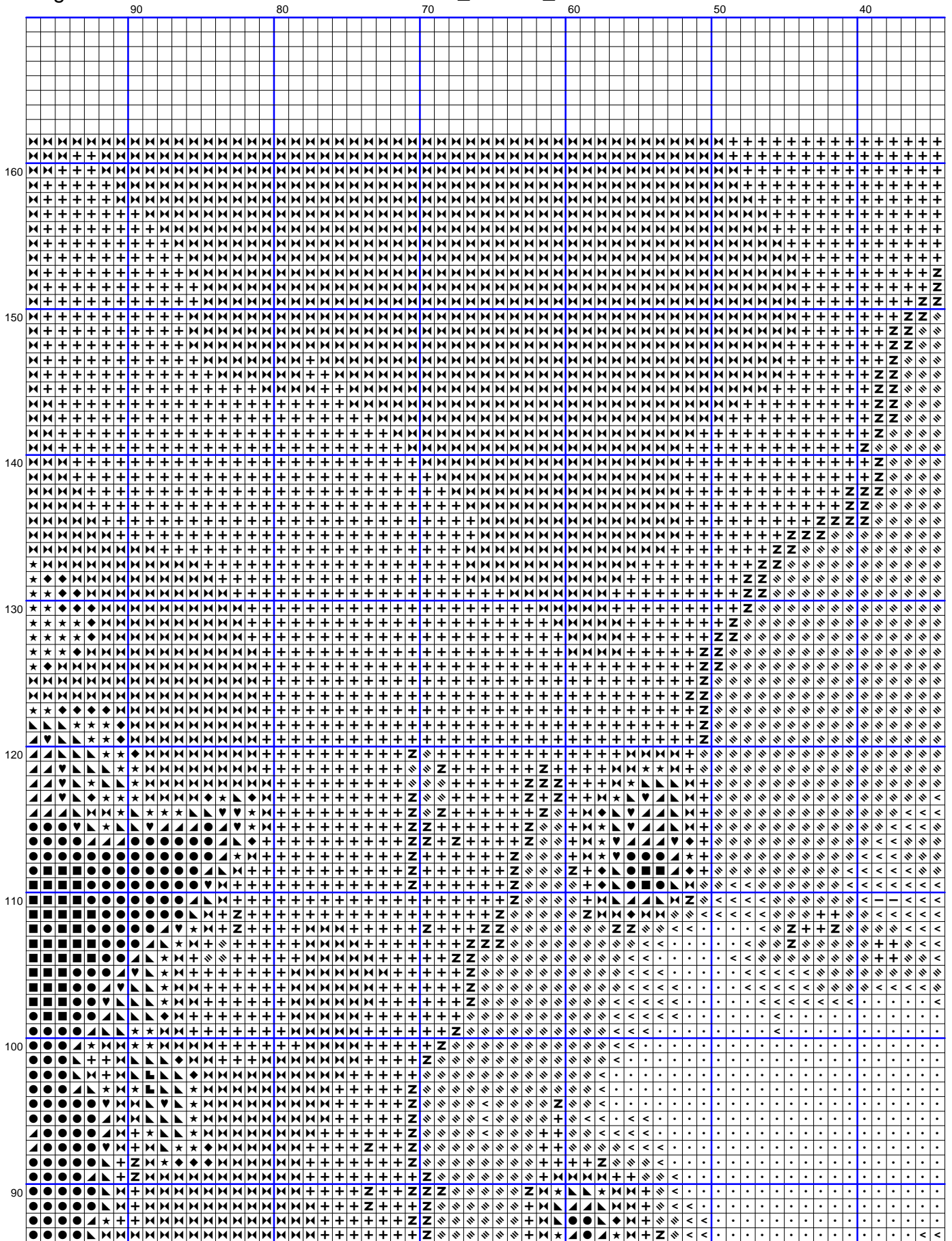


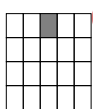
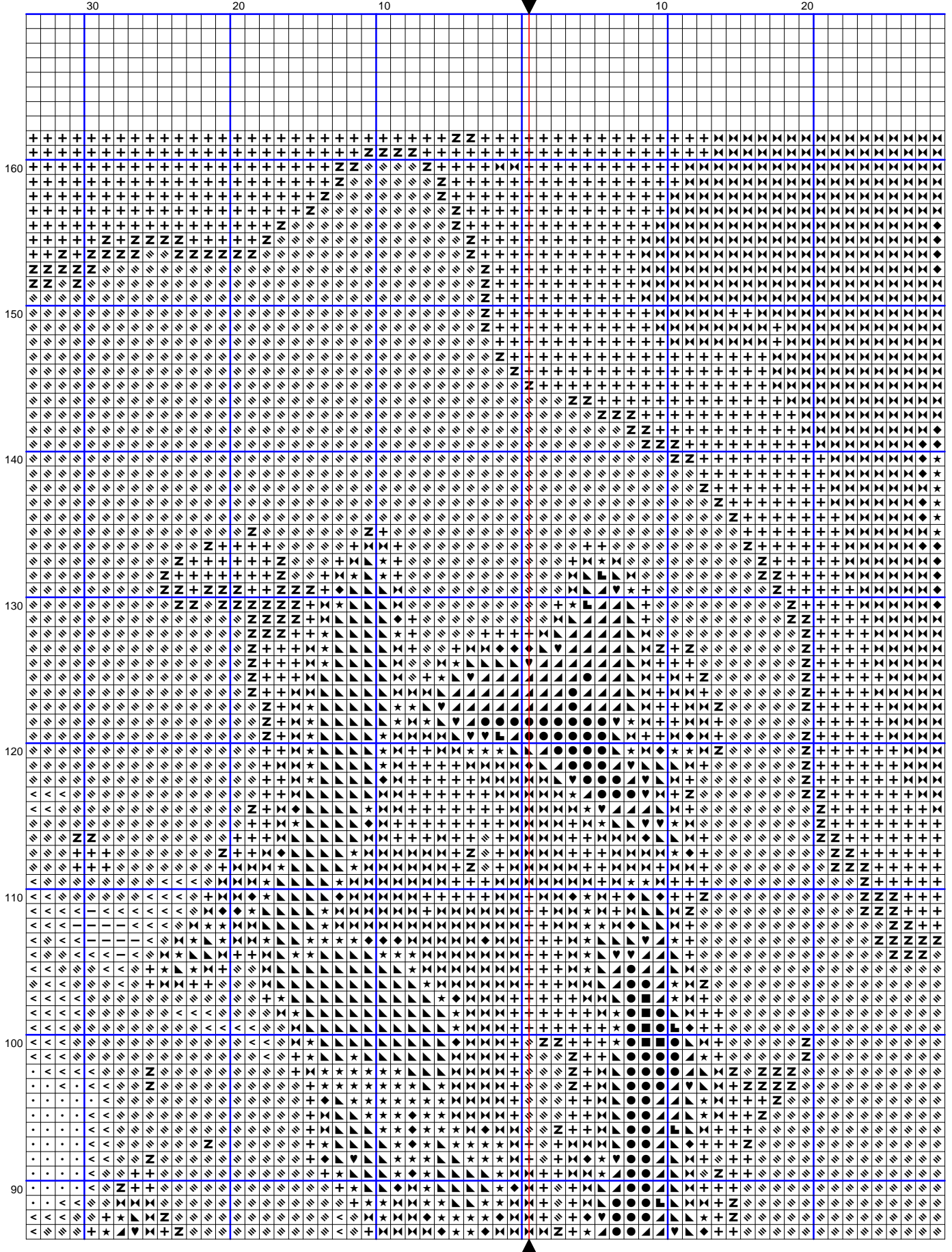
Avançat – Avanzado - Advance



XXXXXXXXXX







	30		40		50		60		70		80		90
	[Grid of symbols and patterns]												
160	[Row 160]												
150	[Row 150]												
140	[Row 140]												
130	[Row 130]												
120	[Row 120]												
110	[Row 110]												
100	[Row 100]												
90	[Row 90]												

100

110

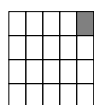
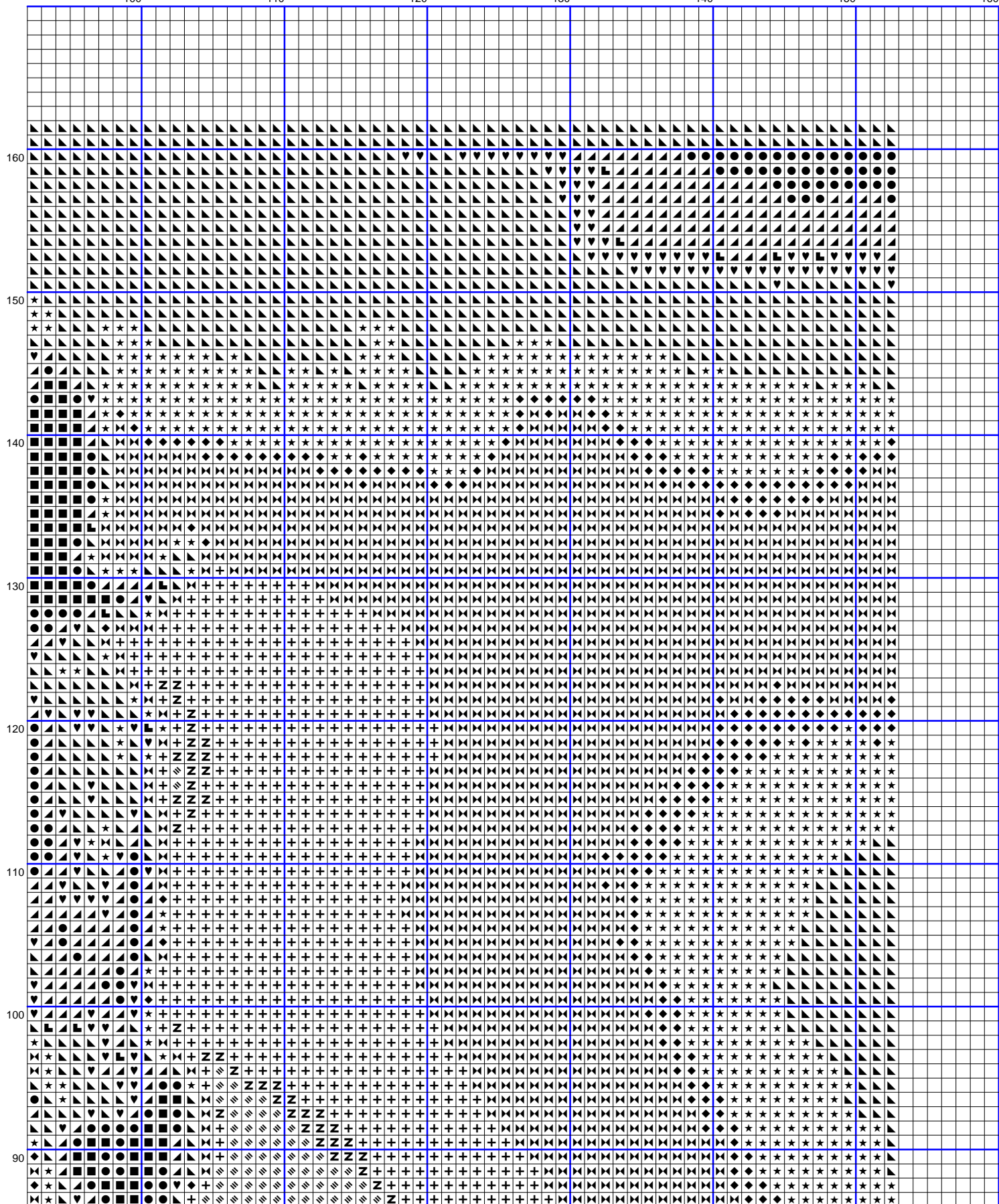
120

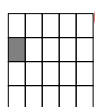
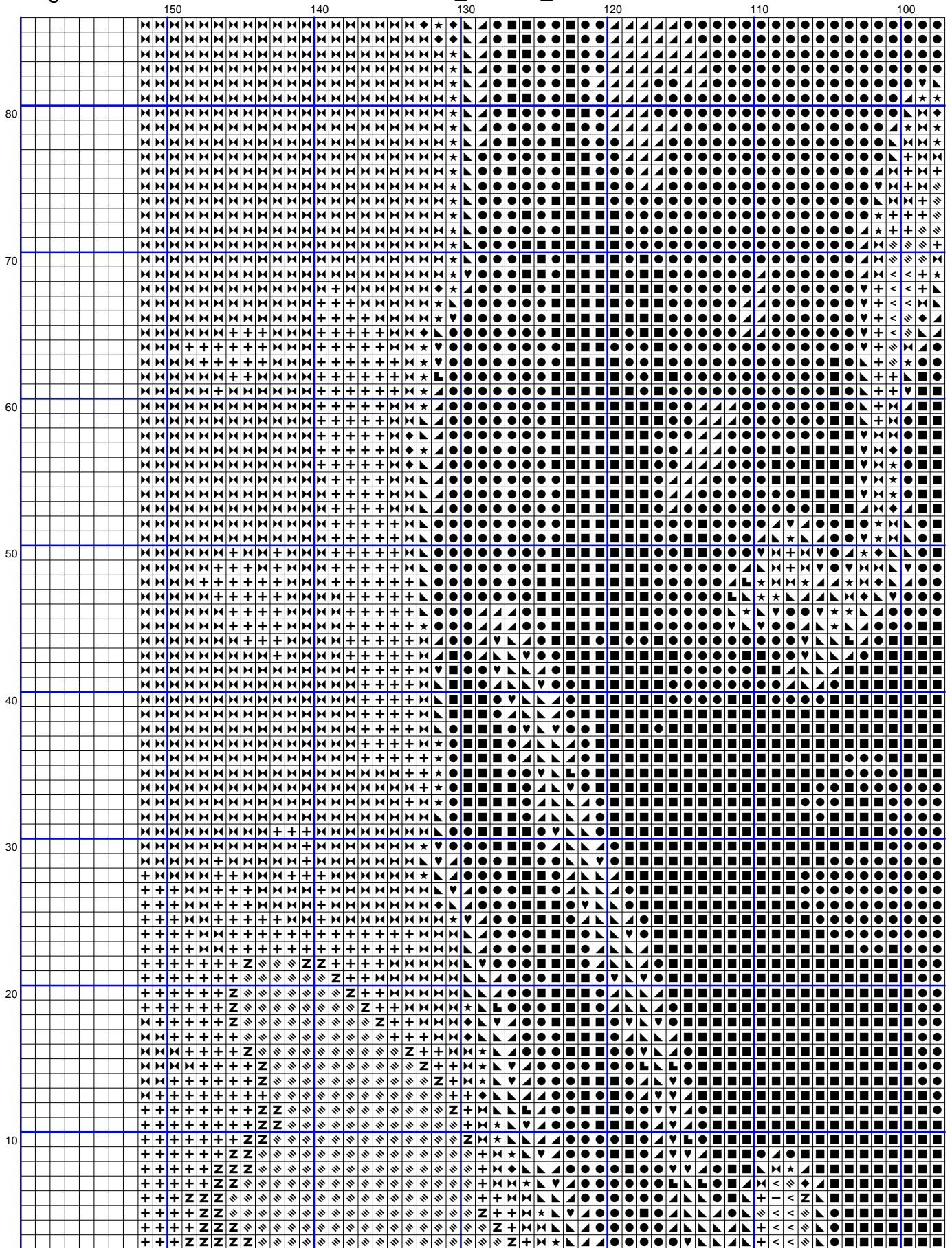
130

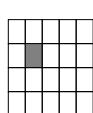
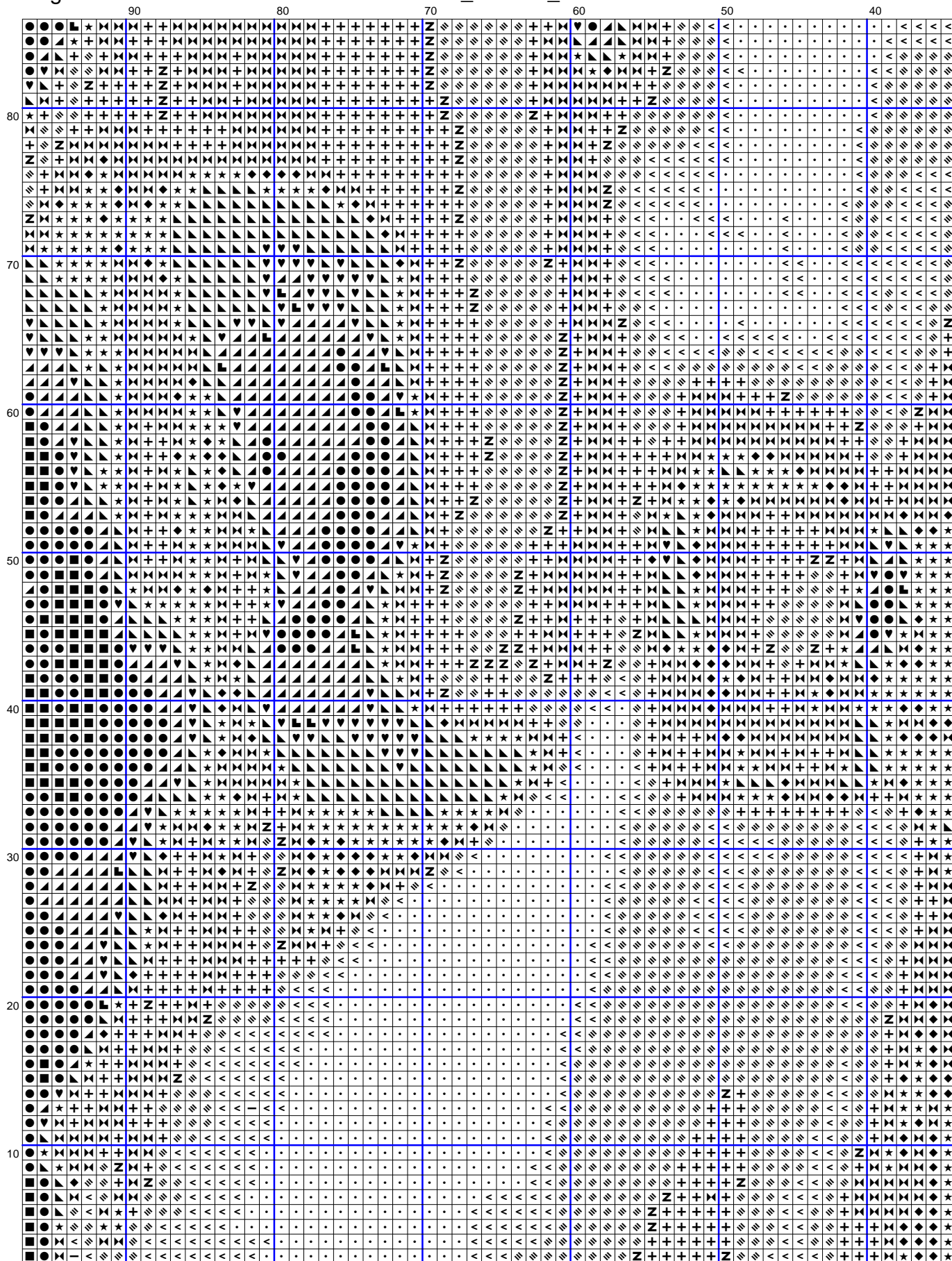
140

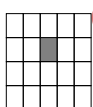
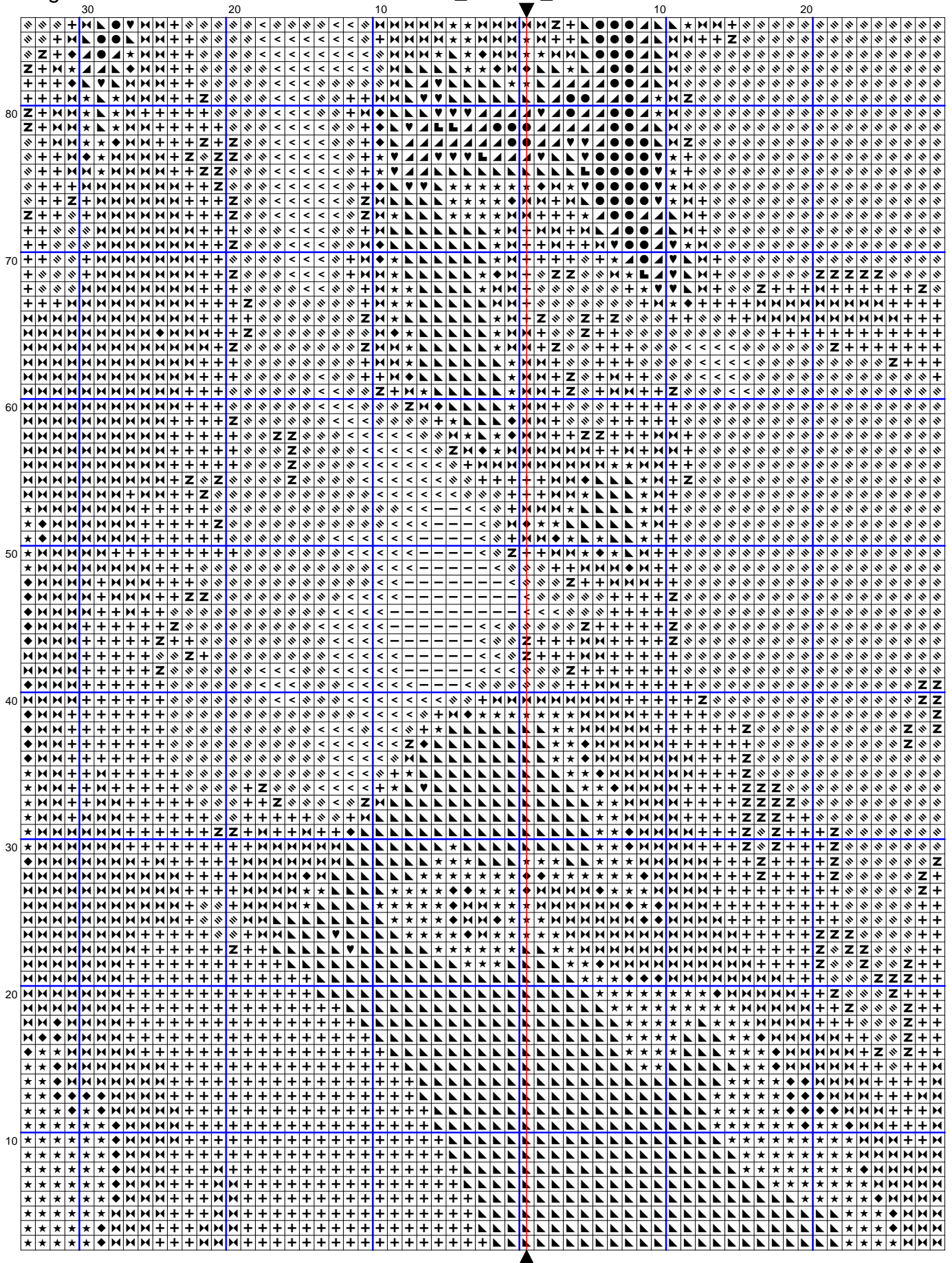
150

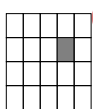
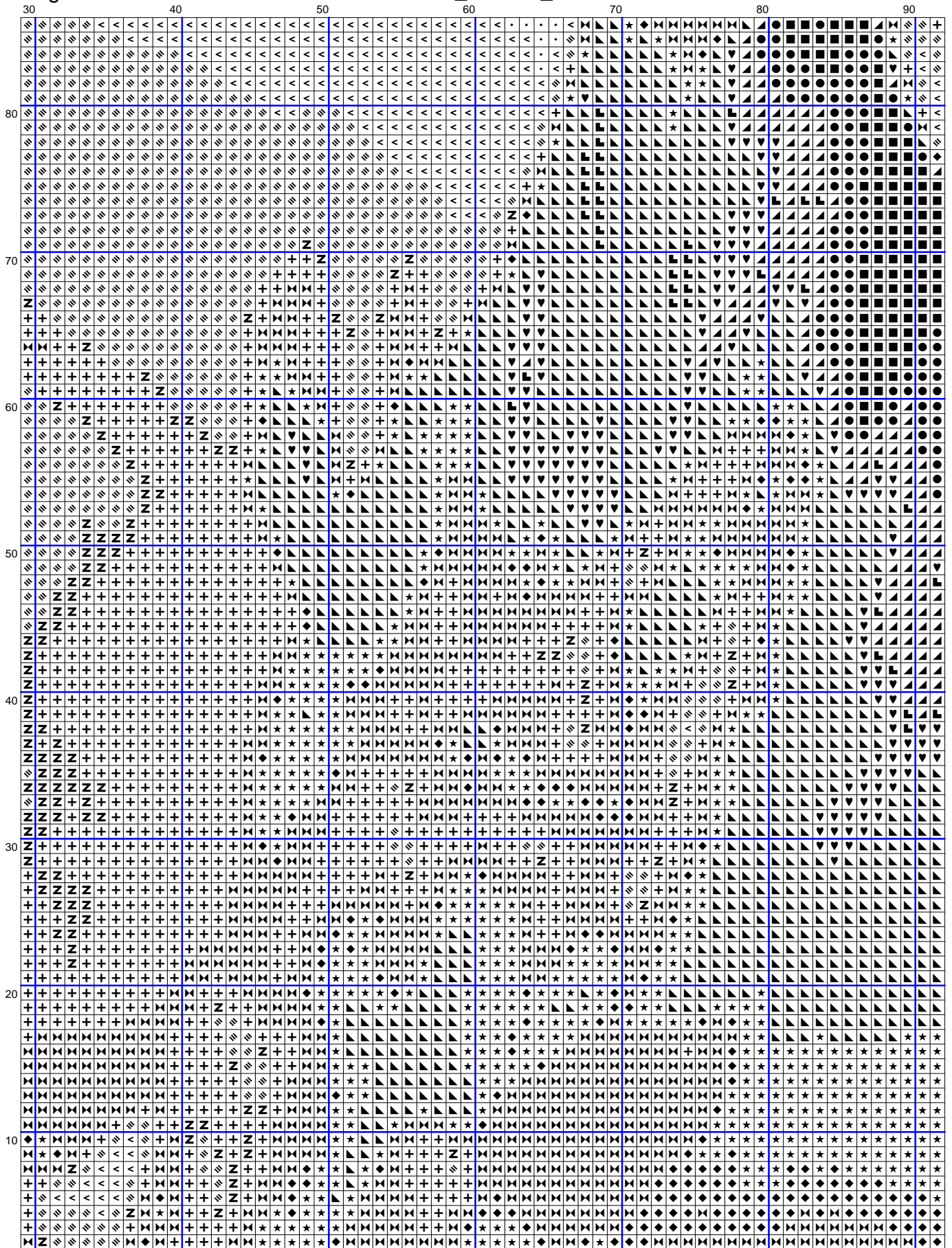
160

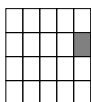
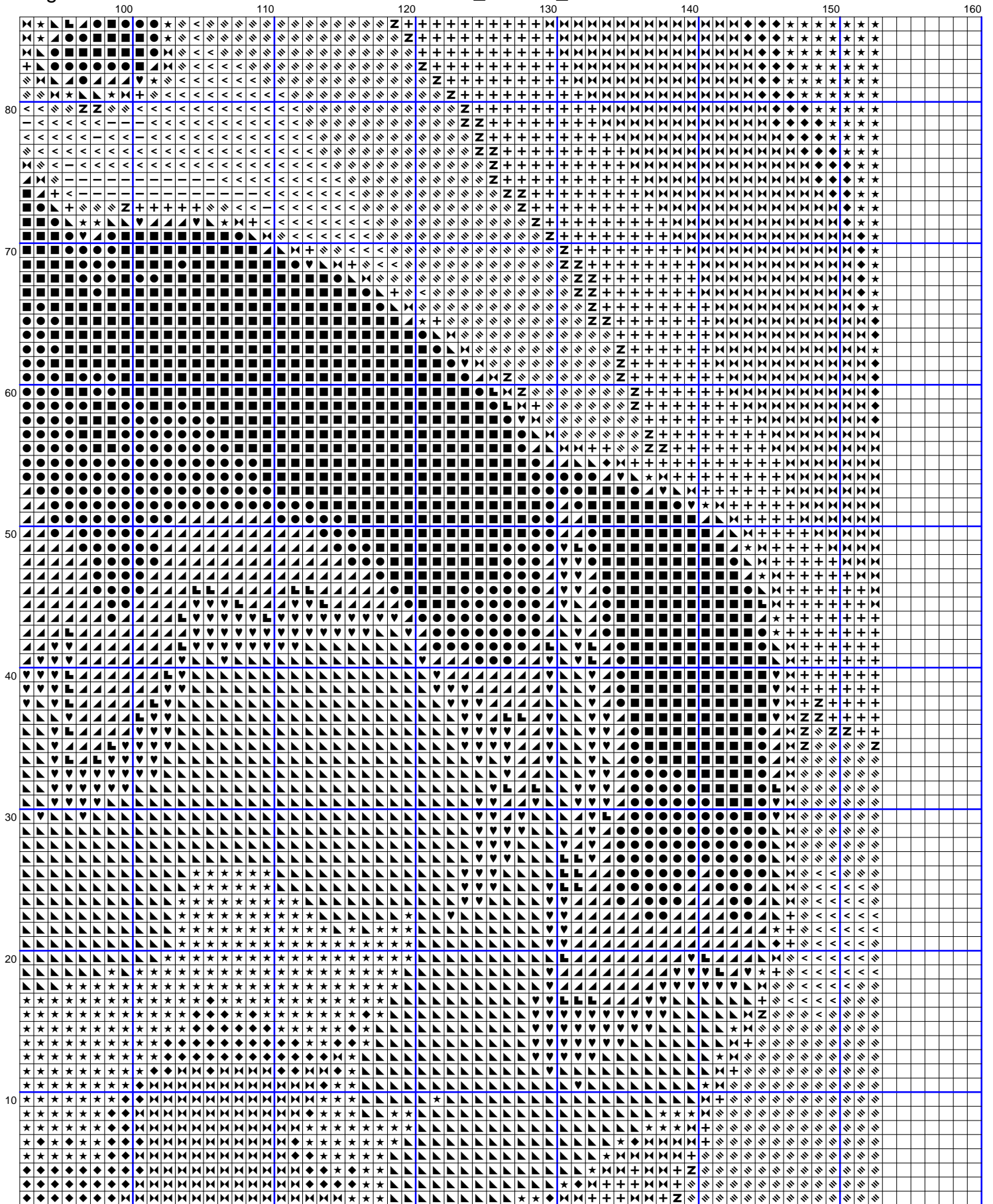


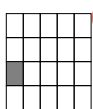
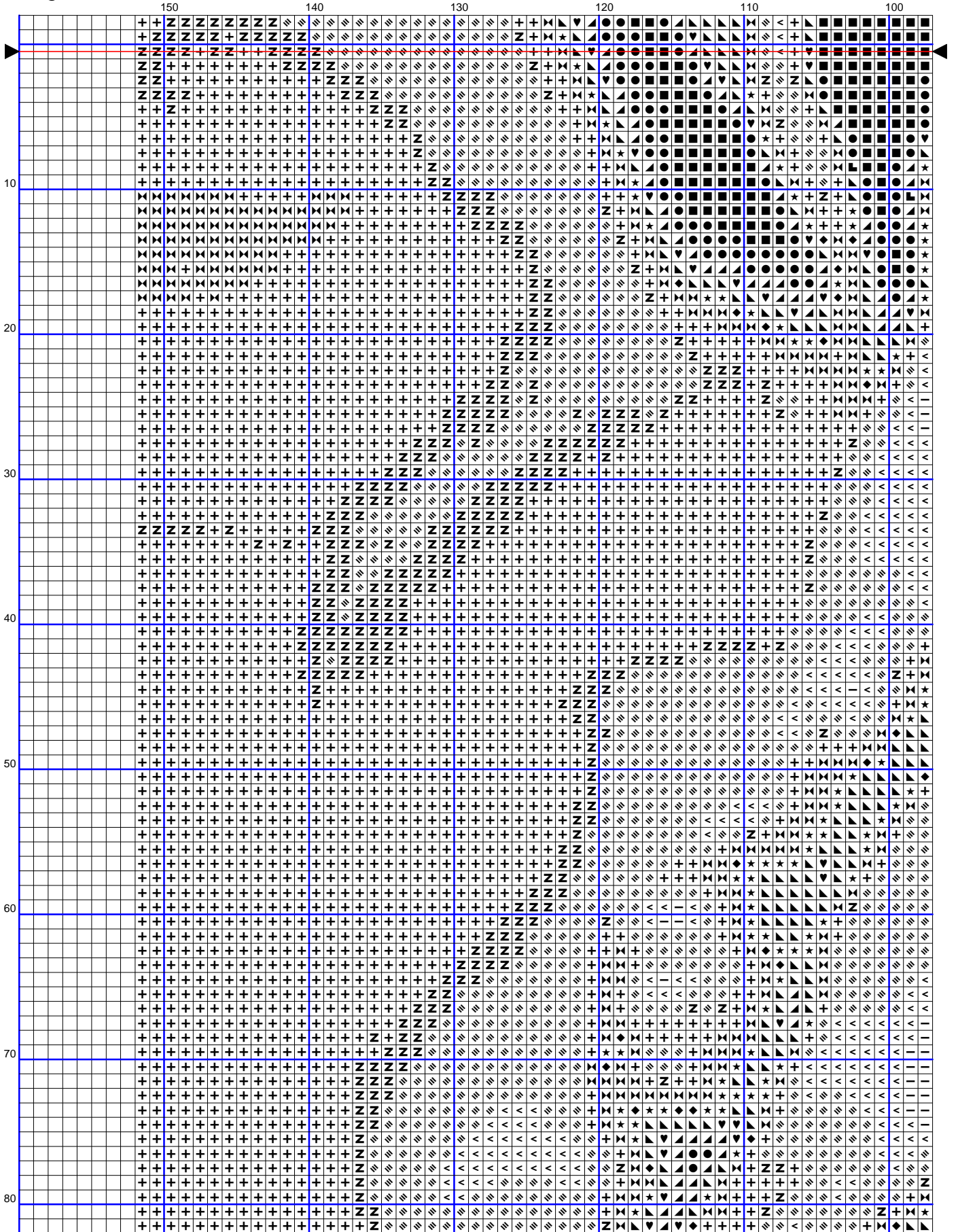


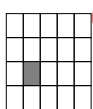
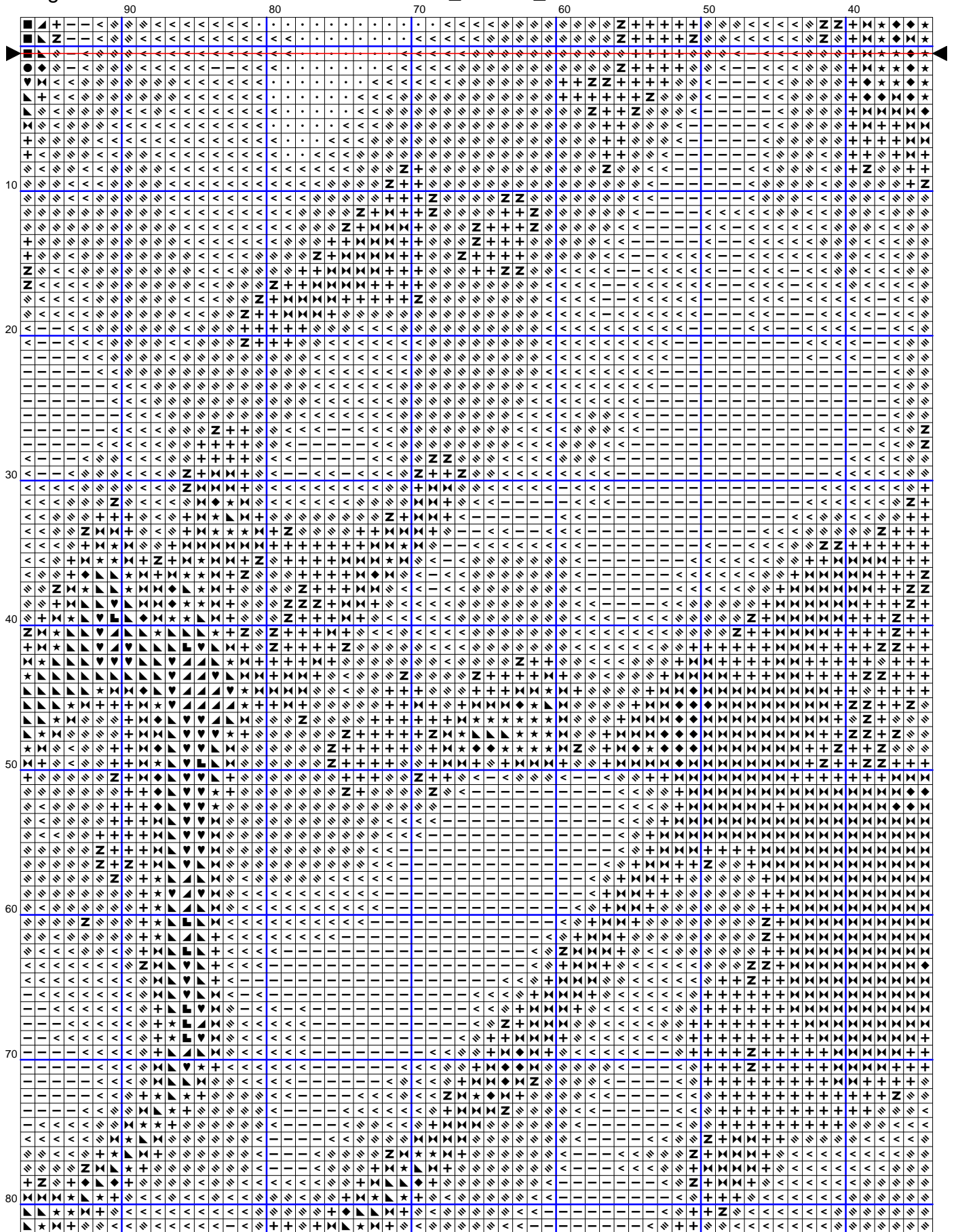


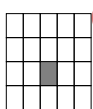
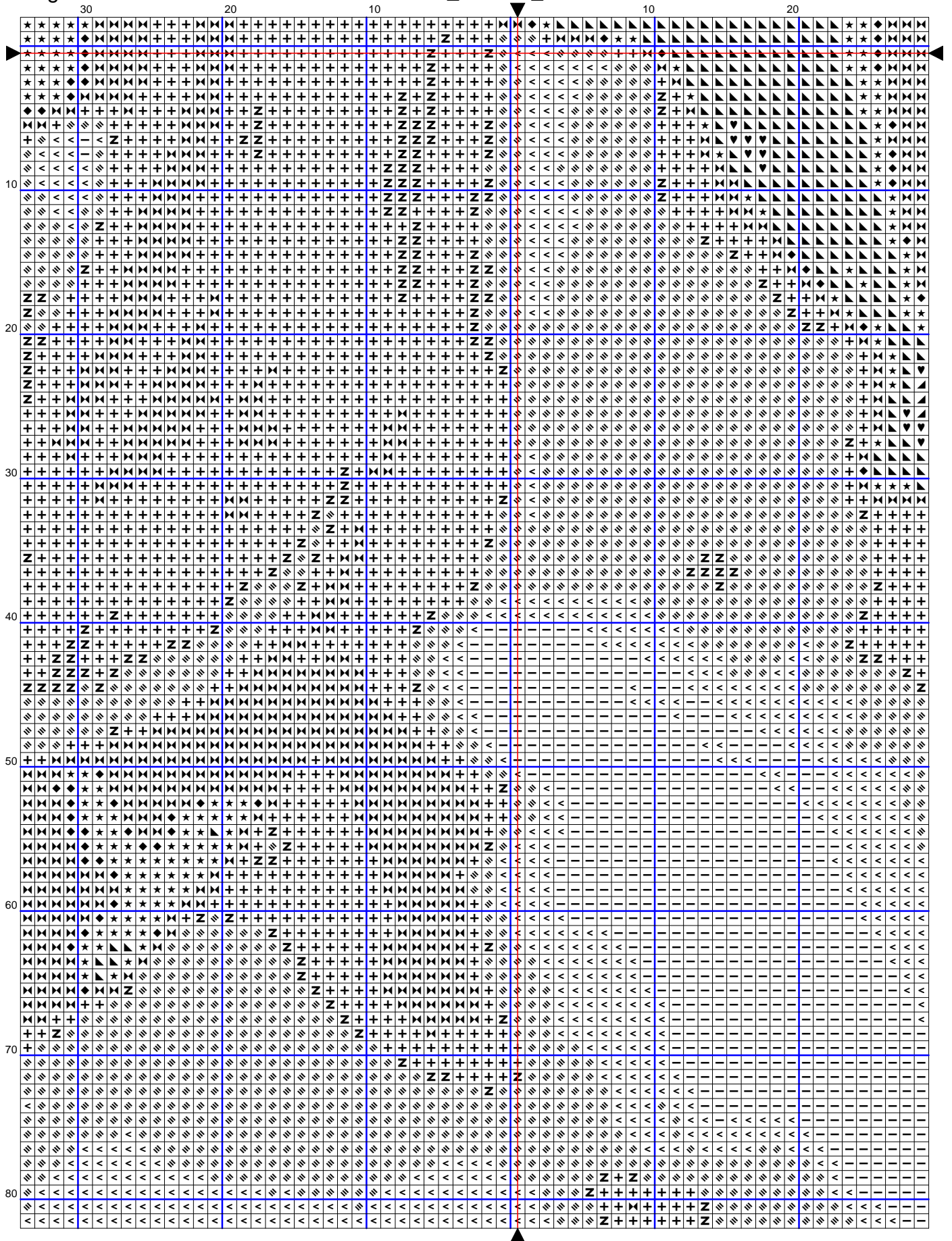


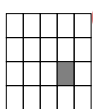
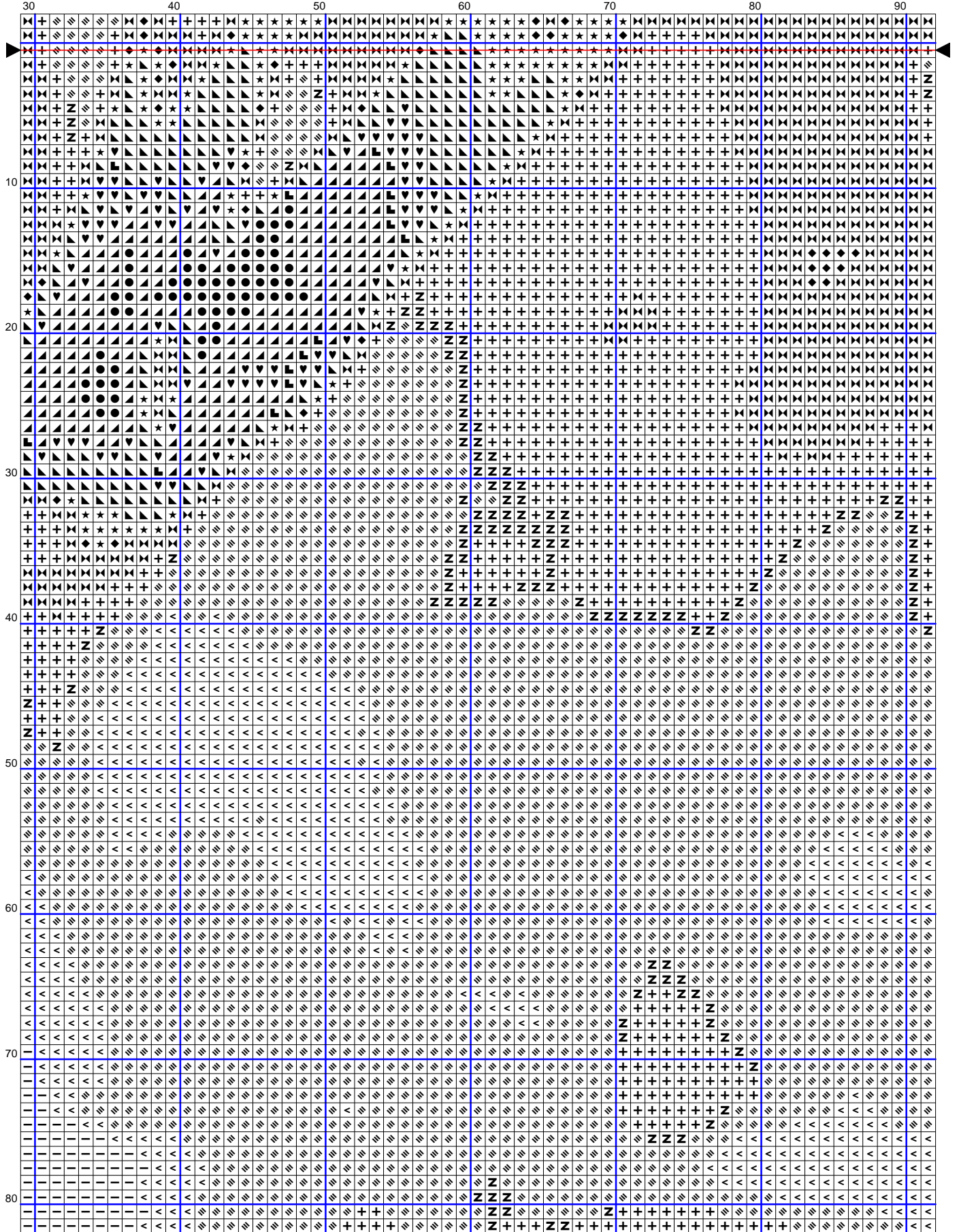


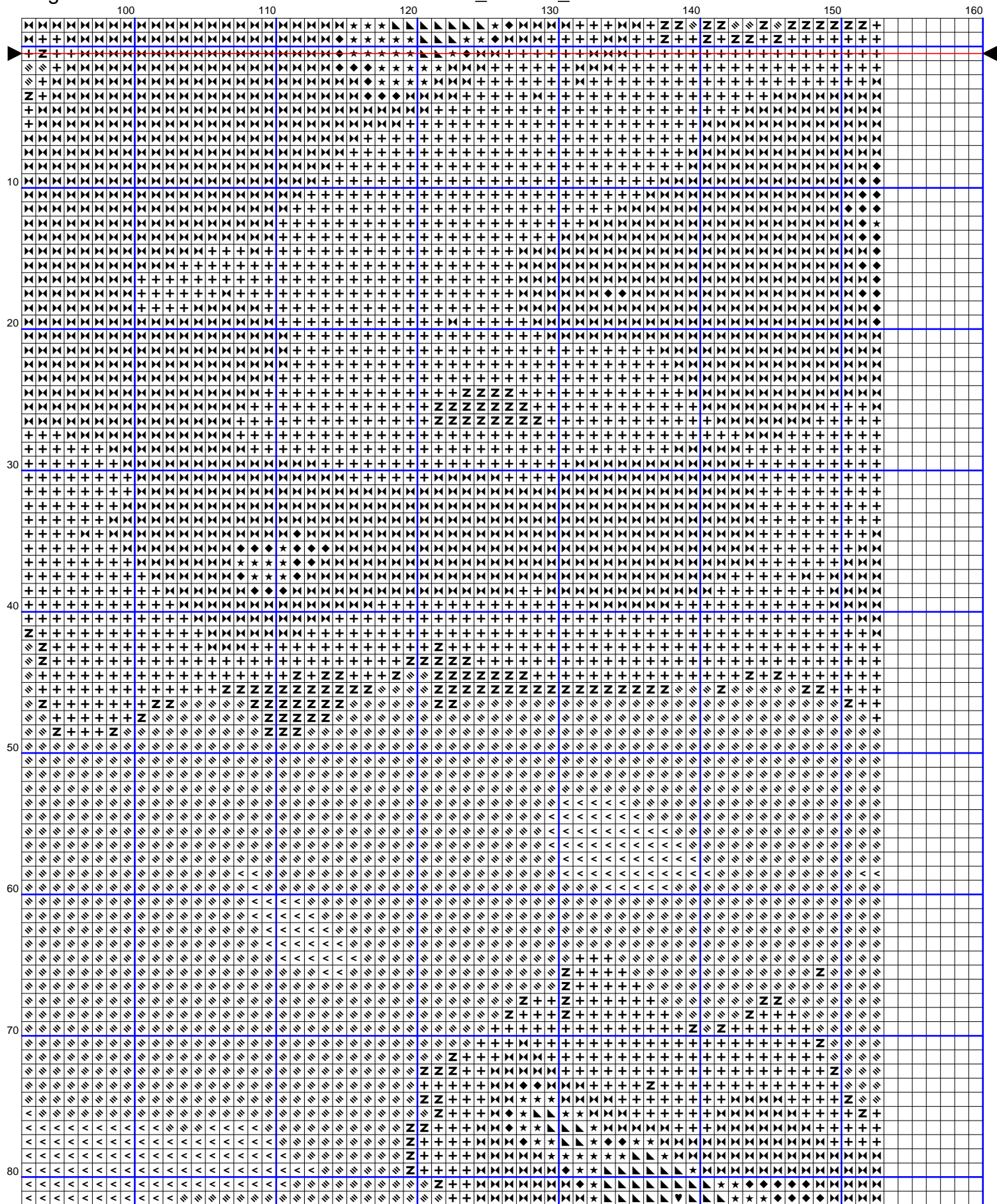




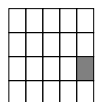


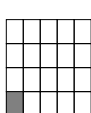
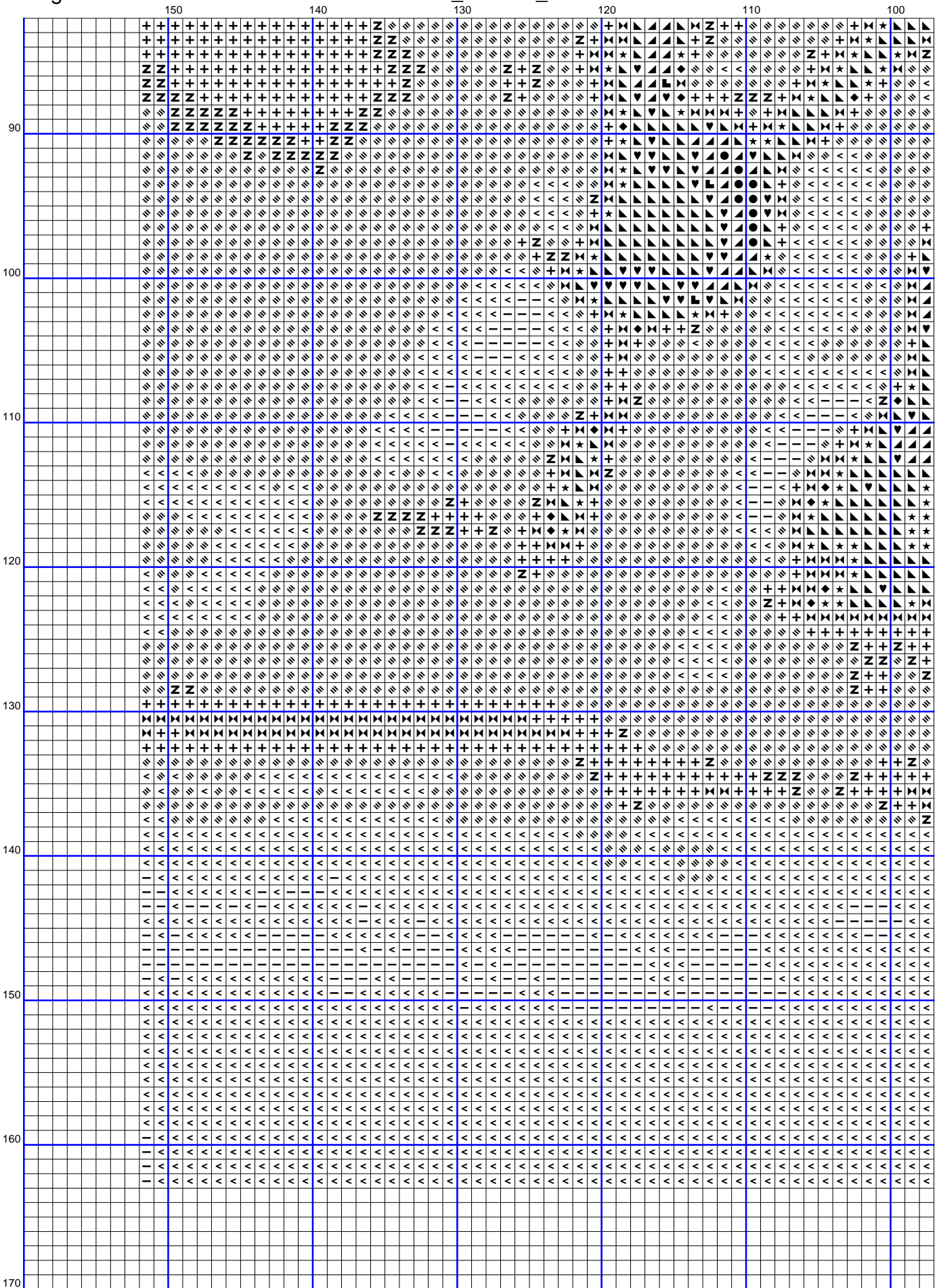


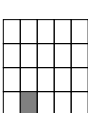
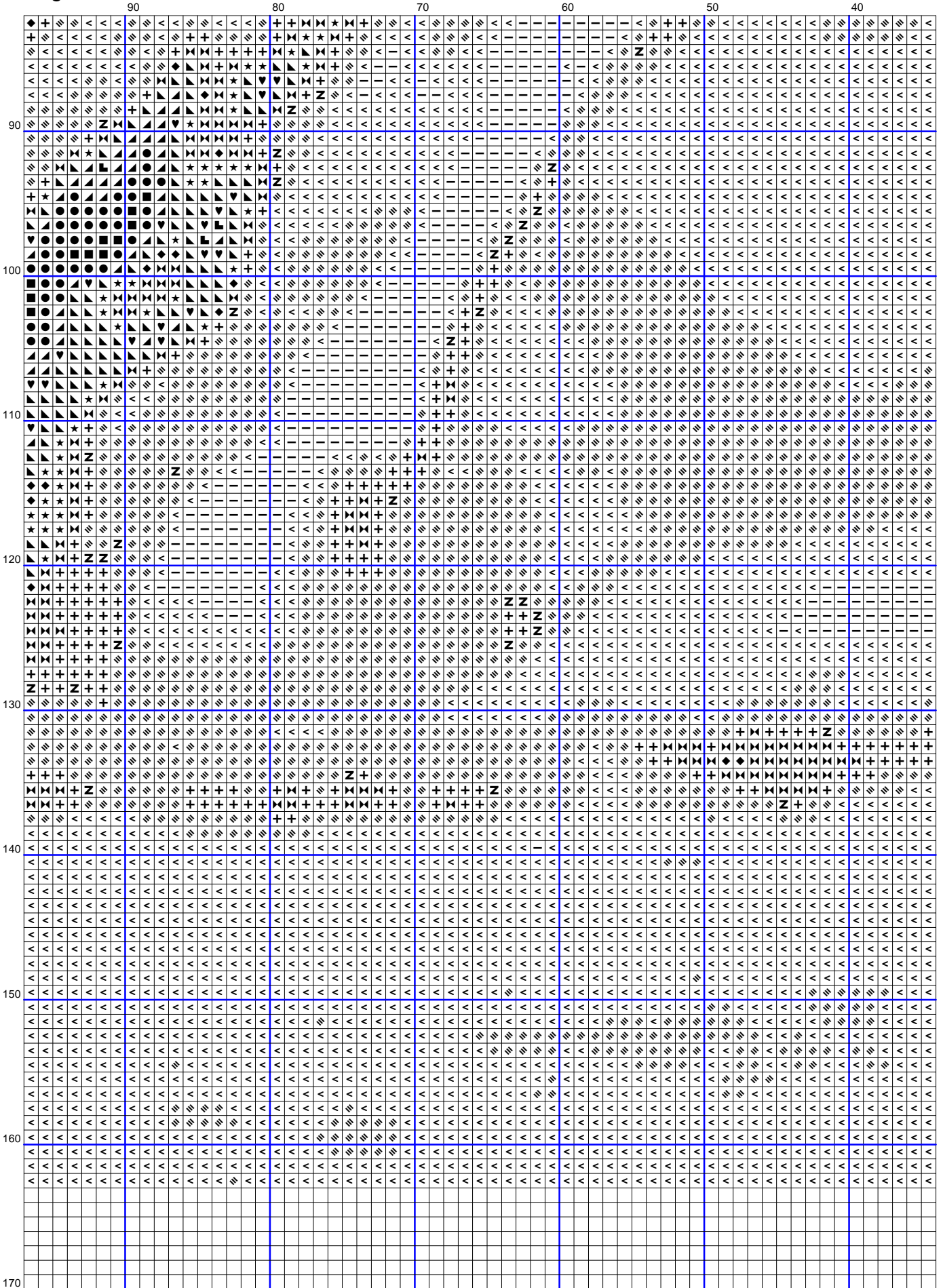


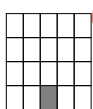
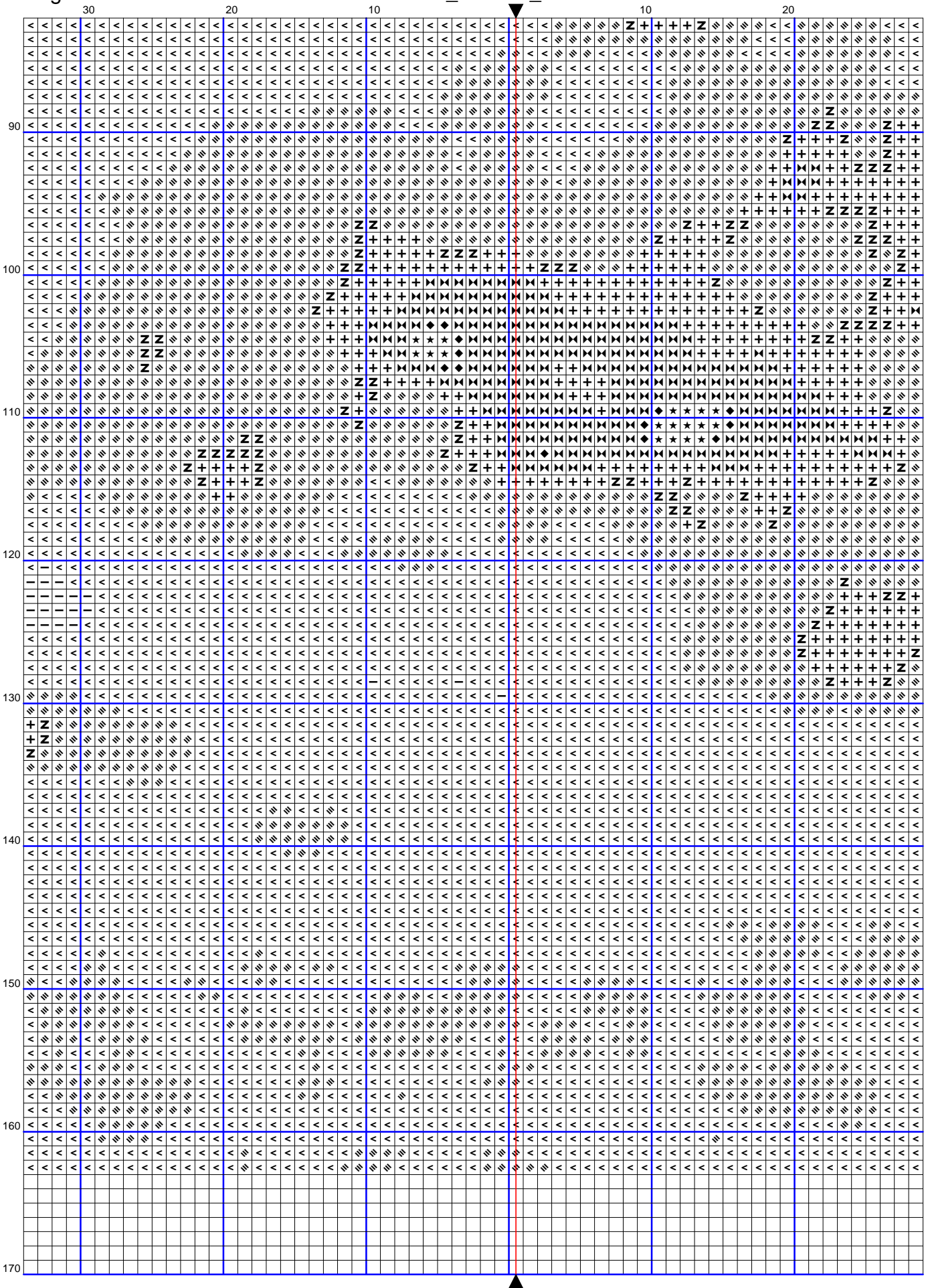


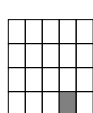
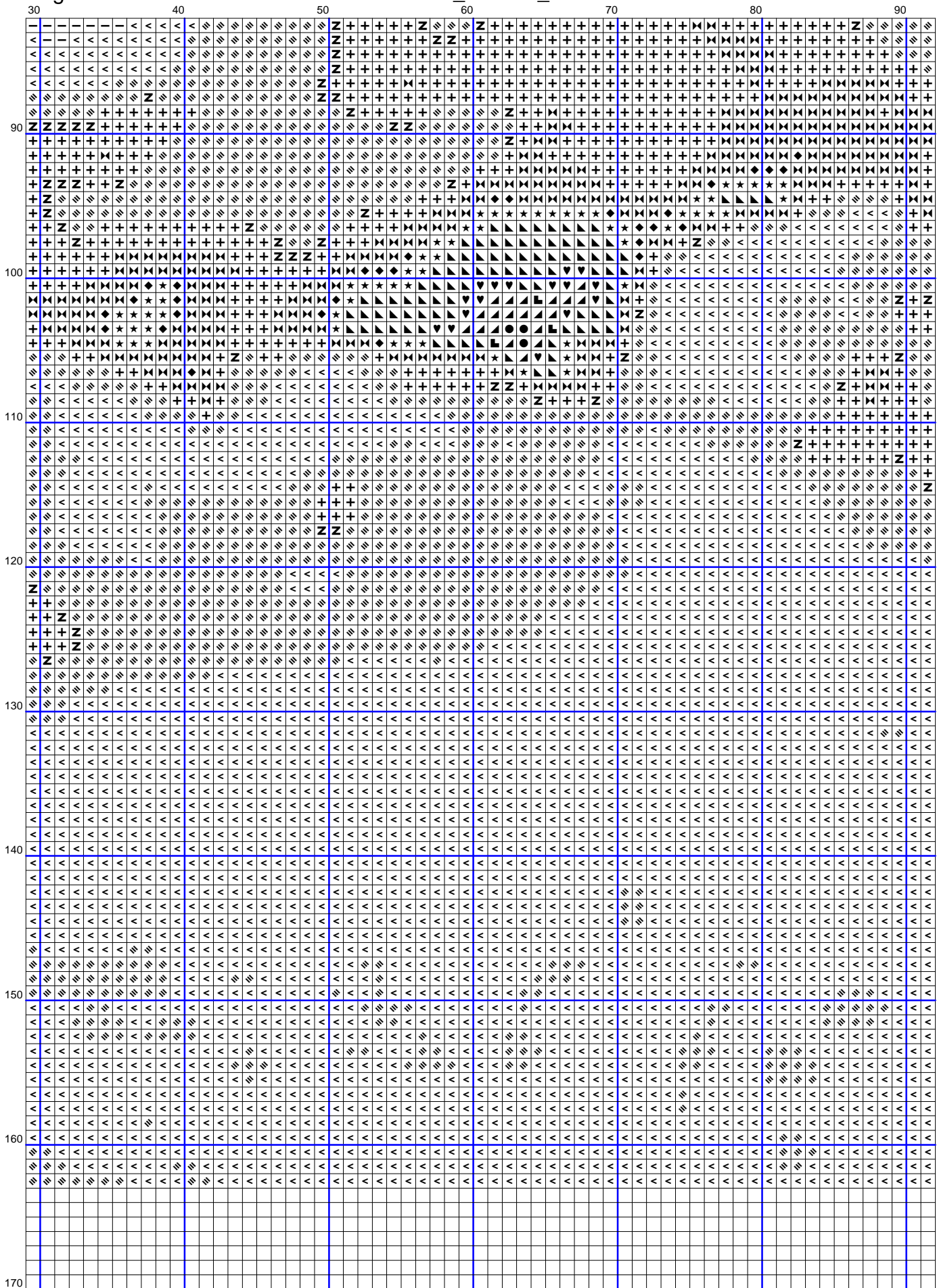
GRAFIC GRATUÏT/ PATRÓN GRATIS/ FREE PATTERN - XAVIER BARÓ

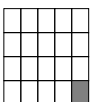
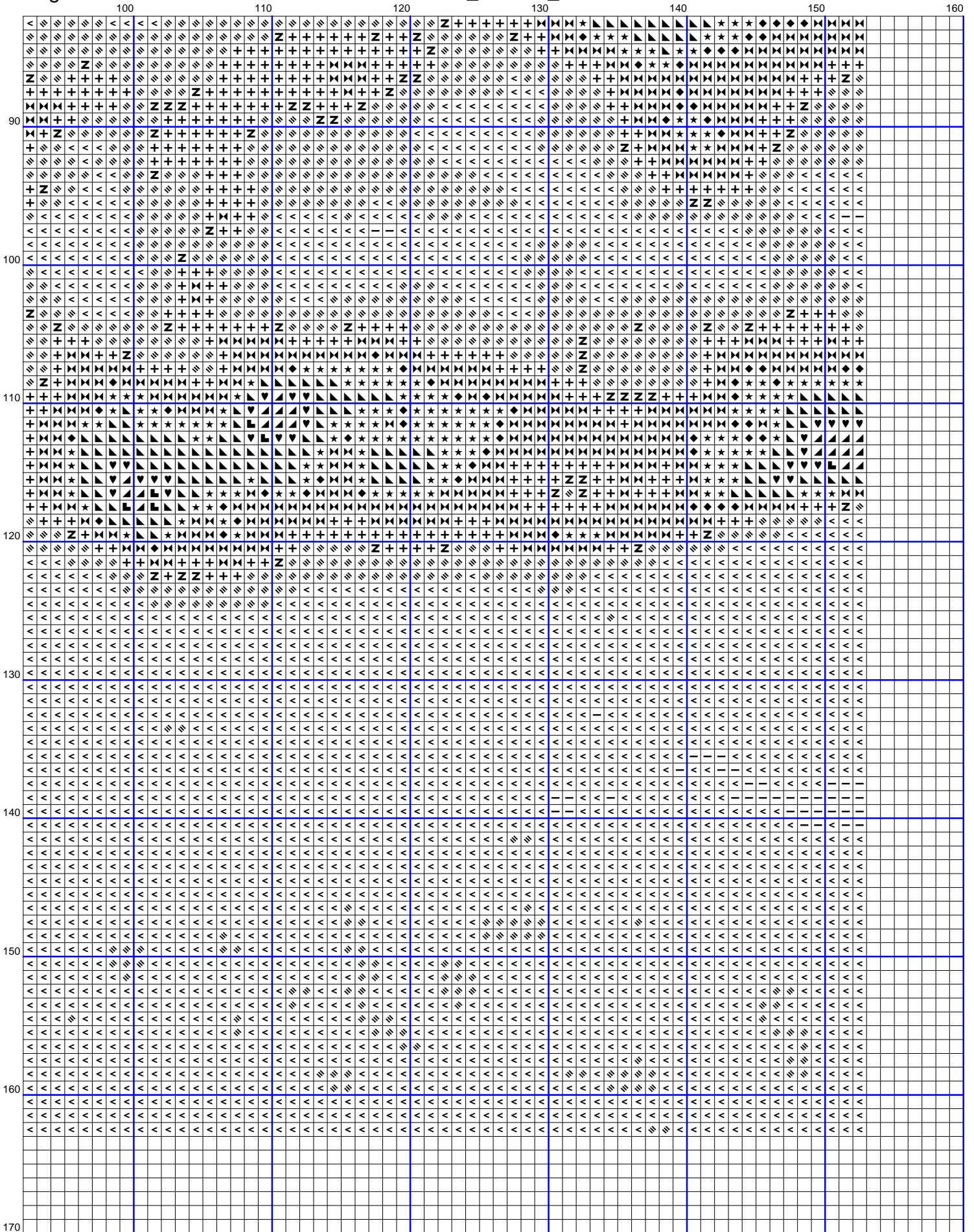












Instruccions i simbologia per al disseny "Ref:PG_Caballs_BN"

Tela: Aida 18 count (7 p x cm.) ó 14 Count (5,5 p x cm.)

Mida: 16.94 x 18.06 inches or 43 x 46 cm

Mida: 21.79 x 23.21 inches or 55 x 59 cm

Punts: 305 x 325

Colors: DMC

GRAFIC GRATUÏT/ PATRÓN GRATIS/ FREE PATTERN - XAVIER BARÓ

Utilitzar 2 brins de fil per p. de creu

Simb	No.	Colour Name	Simb	No.	Colour Name
<	1	White Tin	≡	2	Tin
+	3	Medium Tin	⋈	4	Dark Tin
●	310	Black	♥	413	Iron grey
◆	451	Shell pink grey	⌚	535	Stone grey
Z	648	Pepper grey	▲	3799	Anthracite grey
·	3865	Winter white	★	535+3	1 brin/hebra/strand X color
▴	535+413	1 brin/hebra/strand X color	■	535+844	1 brin/hebra/strand X color
—	1+3865	1 brin/hebra/strand X color			



GRAFICS XAVIER BARÓ

Patrons dissenyats per gaudir del punt de creu

Patrones diseñados para disfrutar el punto de cruz

<https://www.xavierbaro.com> - <https://xavierbarografics.com> - <https://graficsxavierbaro.com>

Aquest gràfic ha estat dissenyat amb les nostres millors intencions de no tenir errors. Tanmateix, existeix la possibilitat d'error humà, errors d'impressió o la variació de les costures individuals i lamentem que no puguem ser responsables d'això.

Nota: Els blocs ombrats del gràfic representen punts sobreposats

Este gráfico ha estado diseñado con nuestras mejores intenciones de no cometer errores, aunque puede existir la posibilidad de error humano, de edición ó variación de puntadas individuales, y lamentamos no poder hacernos responsables de esto.

Nota: Los bloques sombreados del gráfico representan puntos sobrepuestos.

This chart has been designed with our best intentions of being without mistakes. However, the possibility of human error, printing mistakes or the variation of individual stitching does exist, and we regret that we cannot be responsible for this.

Note: The shaded blocks on the chart represent overlapping stitches.

Copyright © Gràfics Xavier Baró 2024 All rights reserved.

Graphics Xavier Baró uses exclusive technology, Cross-Stitch Easy Interpretation. - GXB-CSEI
D.Ed.:Xavier B.